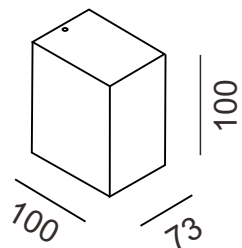


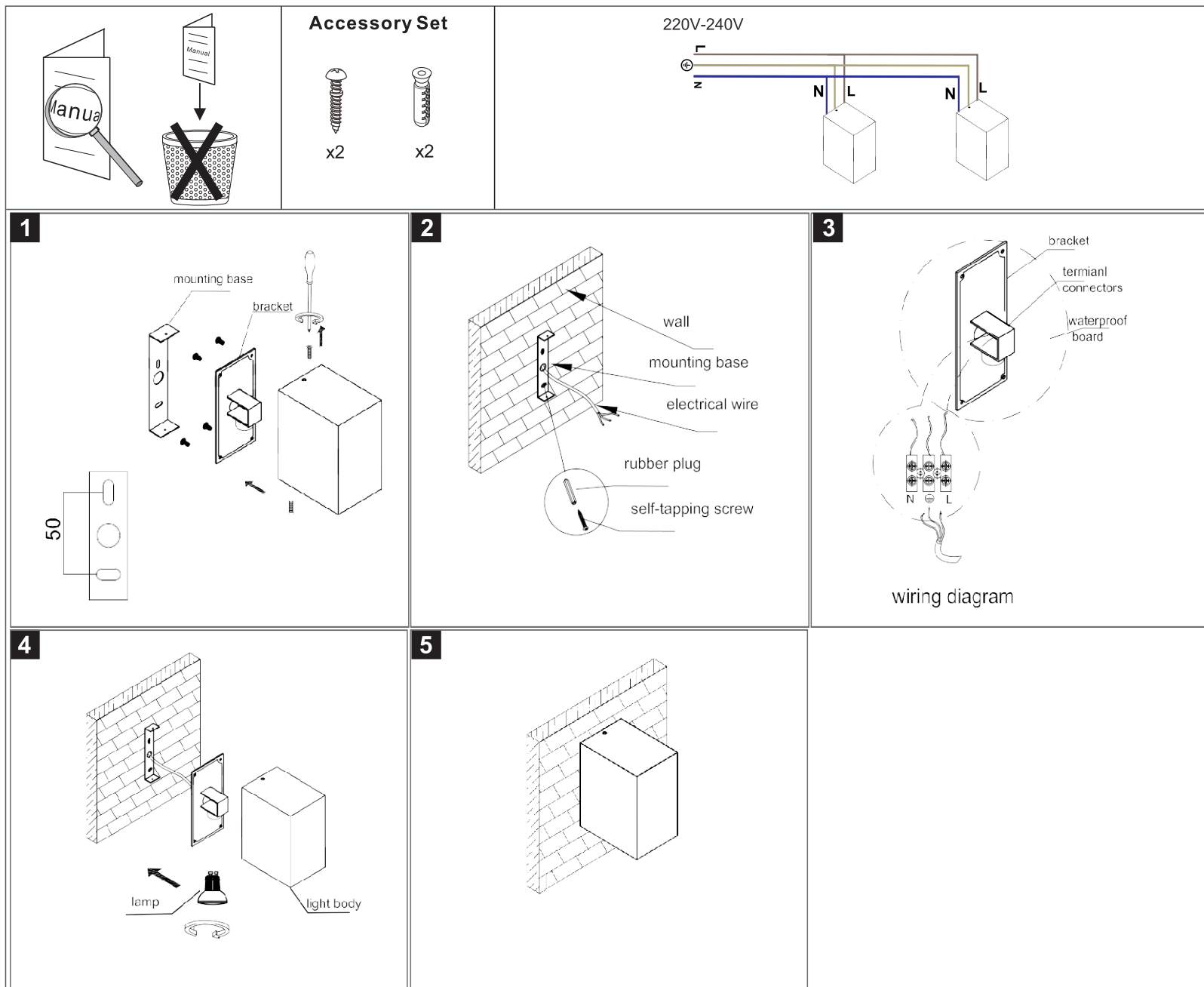
# GRAPH1 08.2010.7.000

POWER: max 7W GU10 LED (NOT INCLUDED)  
INPUT: 220V/240V 50/60Hz



## Installation Instruction

1. Take out the lamp from the product packaging, then remove the mounting base and bracket holder with a screw driver.
2. Use percussion drilling to drill holes on the wall where you want to install the lamp according to the installation screws in the accessories pack.
3. Cut off the main power and connect the electrical wire to the terminal connectors of the bracket (Live wire connect to L. Earth wire connect to ⊕. Null wire connect to N).
4. Install the lamp on the head, and then fix the bracket on the light body use screwdriver, finally install the lamp to the iron mounting base on the wall, and lock tightly with screws.
4. Install the lamp on the head, and then fix the bracket on the light body use screwdriver, finally install the lamp to the iron mounting base on the wall, and lock tightly with screws.



### Attentions:

1. The lamp must be installed in rated voltage and assure safety earth.
2. Installing and fixing the lamp should be processed by professional under the condition power off.
3. When change the lamp bulb please noted that the max wattage shouldn't exceed the labeled wattage.
4. If the external electrical wire damage please changed by the professional in time in case of any danger

**LTX**  
LIGHTING SOLUTIONS  
LTX-LED.com

Lightonix sp. z o.o.  
Ul Hoza, 86 lok. 410  
00-682 Warszawa, Poland  
Telephone: +48 516 808 834  
E-mail: info@ltx-led.com