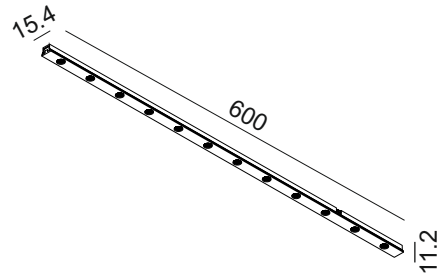


**MINI\_LINE 42 COMFORT 600**  
**07.6001.8.930**

POWER: 8W  
 DC 42V



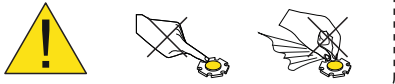
**SAFETY INSTRUCTIONS**

- The appliance should be installed, connected and tested by qualified electrician, and in accordance with local regulations.
- Turn off the power supply before installation or maintenance of the appliance, and make sure that the cables will not be squeezed or damaged by sharp edges.
- The appliance should not be covered by insulation blankets or similar materials .
- Clean the appliance with a soft cloth and a standard PH neutral detergent. Stainless steel surfaces should be maintained regularly.
- Misuse of, or changes to the appliance shall nullify the guarantee. The manufacturer is free to change the design, specifications and instructions for assembly.

**⚠ DO NOT CONNECT THE APPLIANCE DIRECTLY TO HIGH-VOLTAGE POWER SUPPLY IF DRIVER IS NOT CONNECTED.**

**USE THE CORRECT DRIVER TO CONNECT.**

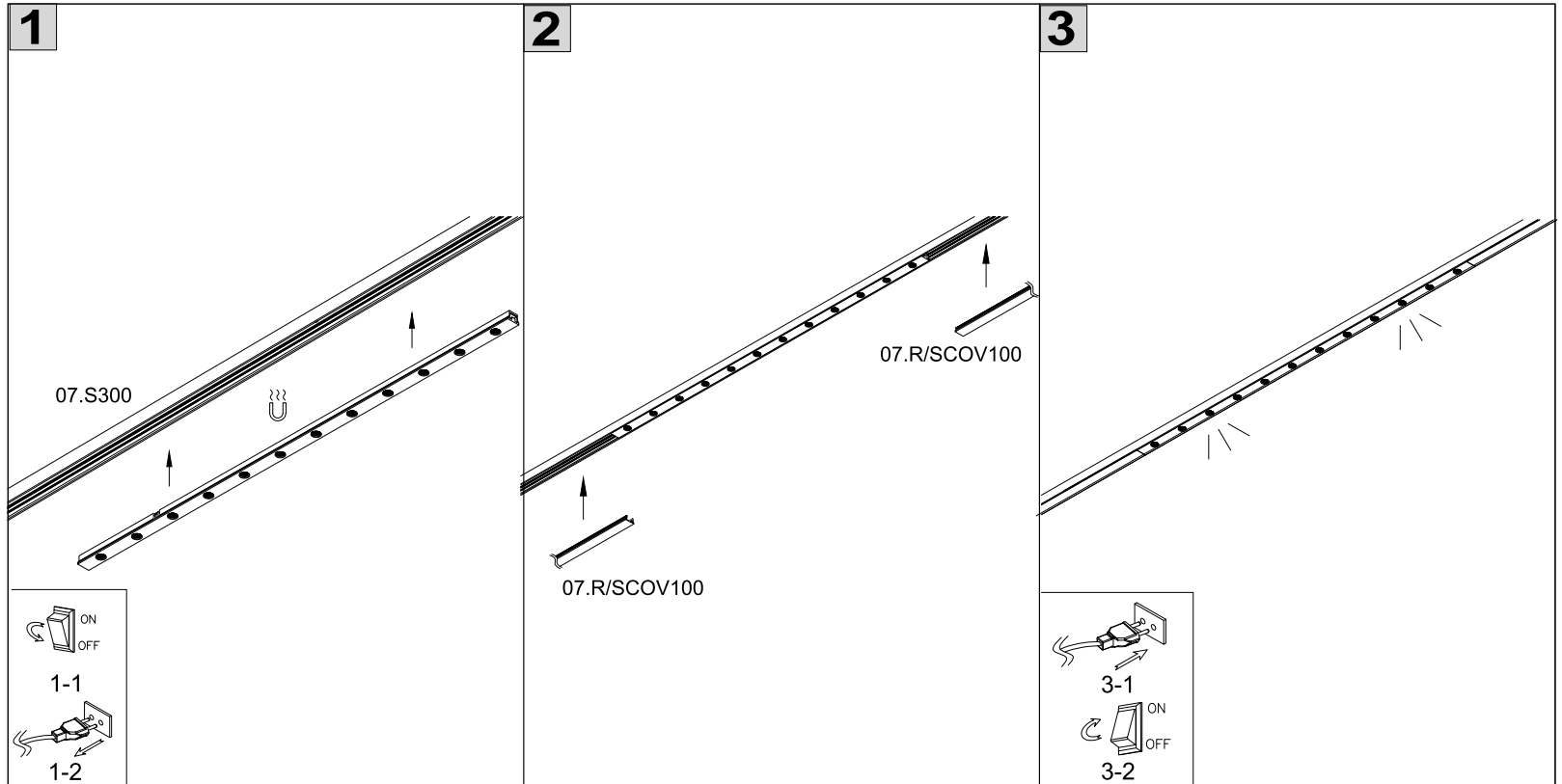
**DO NOT TOUCH OR CLEAN THE LED ARRAY!  
 IN ORDER TO AVOID DAMAGING THE LED CHIP!**



CE EAC



IP20



**LTX**  
 LIGHTING SOLUTIONS  
 LTX-LED.com

Lightonix sp. z o.o.  
 Ul Hoza, 86 lok. 410  
 00-682 Warszawa, Poland  
 Telephone: +48 516 808 834  
 E-mail: info@ltx-led.com