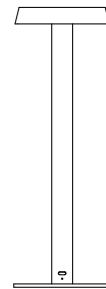


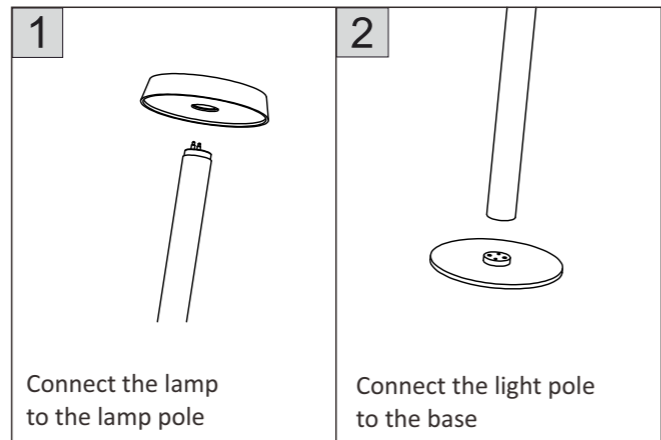
**LTX**  
LIGHTING SOLUTIONS

# MOON TABLE LAMP

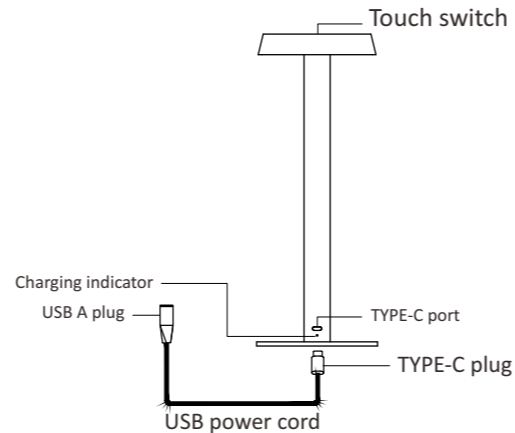


LTX-LED.com

## Installation manual

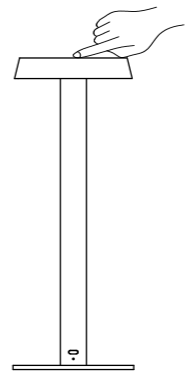


## Product Description



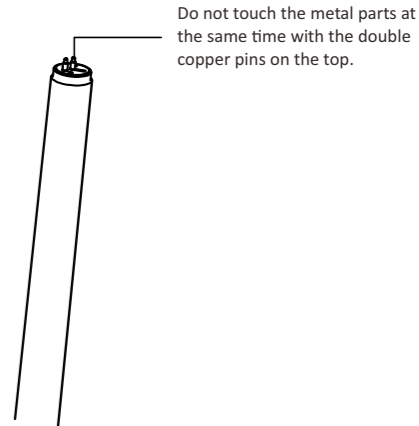
Charging indicator:  
- GREEN light means fully charged  
- RED light means charging

## Instructions



1. Click the touch switch: turn on/off the light;
2. Double-click the touch switch: switch the dimming mode (brightness or color temperature);
3. Long press the touch switch: to adjust the brightness/color temperature.

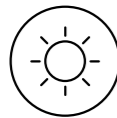
## Precautions



## Features



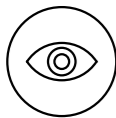
Color temperature adjustment



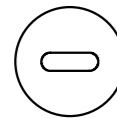
Dimming



Touch sensor



Eye-caring



TYPE-C port



Memory function

## Basic parameters

Product Name: **MOON Table Lamp**

Product model: **10.3512.02.TW**

Product material: aluminum

Maximum power: 2W

Color temperature range: 2200-5000K

Dimming method: long press dimming / double click to switch modes

Charging connector: Type-C

Adapter: 5V adapter (regular phone charger)

Battery: 3.7V 4500mAh.

## Basic parameters

Charging time: charging time is about 6 hours to fully charge.

Discharge time: 6 hours with maximum power on.

The battery should not be completely discharged and then recharged;

It will affect the service life of the battery.

It is recommended to charge when there is still light

Working conditions: temperature:  $-10^{\circ}\text{C}\sim 40^{\circ}\text{C}$

Storage Conditions: temperature:  $-10^{\circ}\text{C}\sim 40^{\circ}\text{C}$

Application places: outside the restaurant area, cafes, restaurants, leisure bar, family table lamp, bedside lamp

Warranty period: two years.

## Safety Precautions

1. Before use, please confirm whether the voltage meets the working voltage of this product. The wrong voltage may damage the product and create a safety hazard;
2. The LED module cannot be replaced, please do not disassemble the product without authorization;
3. The MOON table lamp will generate heat during operation, please keep the surrounding air convection to dissipate heat;
4. It is recommended to turn off the lamp when charging the desk lamp to avoid high heat generated by the drive board;
5. When not in use for a long time, please fully charge it every three months to prevent the battery from self-destructing discharge, causing damage to the battery.



**LTX** Lightonix sp. z o.o.  
Ul Hoza, 86 lok. 410  
00-682 Warszawa, Poland  
Telephone: +48 516 808 834  
E-mail: info@ltx-led.com